

Surface Diving System



KD Marine's surface diving systems embody over 40 years of experience in providing diving services on offshore exploration and production installations. The systems maintain a high standard of safety and reliability yet have a minimal foot print and interface impact on the installation. All offshore installation based diving employ EAD (equivalent air depth) decompression methods and use a nitrox breathing medium therefore no decompression penalties are incurred and operations remain within PFEER (Prevention of Fire, Explosion and Emergency Response) Regulations.

Main Particulars

Containerised Zone II Surface Diving System
Road Transportable

Decompression Chamber

Containerised twinlock decompression chamber
Emergency Breathing System for DDC Operator

Compliance

HSE Offshore ACOP
IMCA Diving D018, D023

Dive Control

A60 Zone II Certified Dive Control Cabin
IS VHF/UHF Mobiles
VHF/UHF Base Station
Nautronix 352X Diver Communication System
Installation telephone and PA Link
Crowcon Multi Gas Alarm
BA set for Diving Supervisors
Oxygen Analysers
CO₂ Analysers
DVR
Video Monitors
Video Data System
Laptop Computer
Laser Printer

Performance/Capabilities

Depth 50 MSW
Up to 2 divers simultaneously
24 hour operations

Sea state up to 2m significant

Diver Deployment

2 x Diver baskets with launch and recovery systems

Redundant air supply via containerised 4000 ltr LP air receiver

Surface Diving System



Lifesaving/Safety Equipment

Light Weight Evacuation Stretcher
 Oxygen Resuscitation Set
 Portable Fire Fighting Appliances and Pumps
 DMAC First Aid Kits
 Life Jackets
 Work Harnesses and Lanyards
 Escape BA Sets for Dive Skid

Personal Divers Equipment

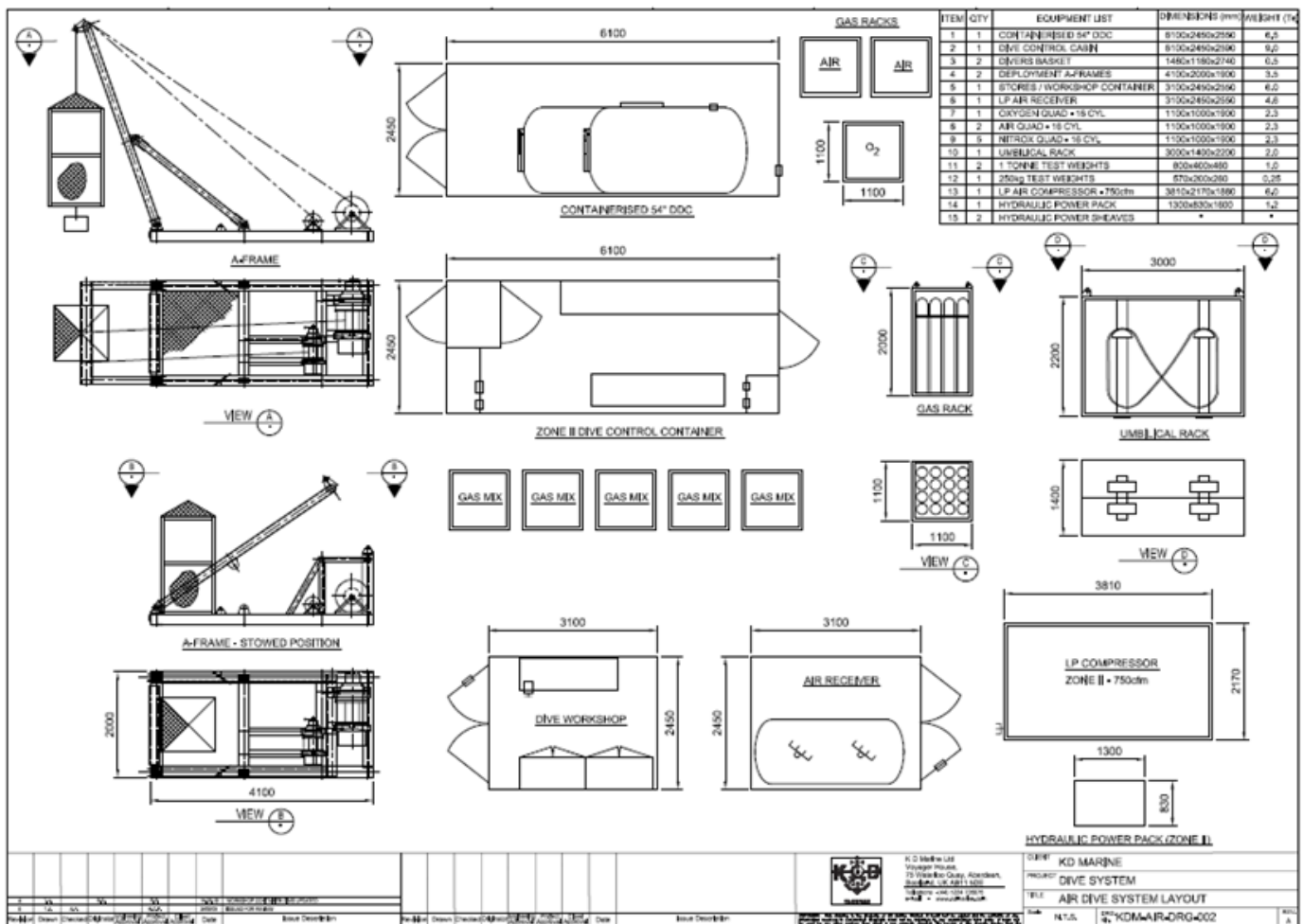
Diver Cameras and Lights
 Deck CCTV Camera
 Dive Status Panel
 Diver Umbilicals
 Diver Helmets and Bailouts
 Standby Diver Helmets and Bailout
 Diver Hot Water System (optional)

Deck/Facilities

Containerised Work Shop & Stores
 Stand By Divers Chair
 Umbilical Hydraulic Sheaves

Support Equipment

Hook Up Cables and Hoses
 Tools and Spares



Dimensions

Description	Length (m)	Width (m)	Height (m)	Weight (kg)
Decompression Chamber	6.1	2.45	2.50	9,000
Dive Control (A60 Zone 2)	6.1	2.45	2.50	8,900
Workshop	3.1	2.45	2.50	6,000
Air Receiver	3.1	2.45	2.50	4,600
Gas Rack	1.1	1.0	1.90	2,300
A Frame	4.1	2	1.90	3,500
Umbilical Rack	3.0	1.5	2.55	2,000